

Supplies and Recycling

This topic includes:

- "Supplies" on page 2-79
- "Recycling" on page 2-80

Supplies

The printer's front panel displays status messages and warnings as each supply nears its replacement time. When the front panel prompts you that a supply is low or needs to be replaced, verify that you have replacements on hand. It is important to order these supplies when the messages first appear to avoid interruptions to your printing.

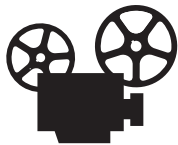
To order supplies, contact your local reseller or visit the Xerox web site at www.xerox.com/office/5500supplies

Caution

Use of non-Xerox supplies is not recommended. The Xerox Warranty, Service Agreements, and Total Satisfaction Guarantee do not cover damage, malfunction, or degradation of performance caused by use of non-Xerox supplies, or the use of Xerox supplies not specified for this printer. The Total Satisfaction Guarantee is available in the United States and Canada. Coverage may vary outside these areas; please contact your local representative for details.

Consumables

Consumables for the Phaser 5500 printer are a toner cartridge and a staple pack.



Videos are available with instructions for changing the toner cartridge and for adding staples. Videos are located on the *User Documentation CD-ROM* and at www.xerox.com/office/5500support.

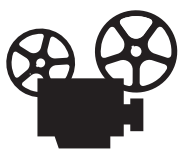
Routine Maintenance Items

Routine maintenance items are printer parts or assemblies that have a limited life requiring periodic replacement. Replacements may be in the form of parts or kits. Routine maintenance items are typically customer replaceable.

Routine maintenance items for the Phaser 5500 printer include the:

- Drum Cartridge
- Maintenance Kit (15 Feed Rollers, Transfer Roller, and Fuser)

Access the “Supplies Usage Page” from the printer’s front panel, from CentreWare IS, or print the “Usage Profile” from the printer’s front panel.



Videos are available with instructions for changing the maintenance kit and for changing the drum cartridge. Videos are located on the *User Documentation CD-ROM* and at www.xerox.com/office/5500support.

Customer Usage Patterns

The Phaser 5500 Laser Printer has supply life indicators for consumables and routine maintenance items. The following customer usage patterns may significantly reduce the life of the consumables or routine maintenance items:

- Using paper that is larger than Letter or A4
- Using higher than five percent area coverage
- Printing jobs with fewer than five pages
- Printing short-edge feed
- Printing transparencies, card stock, or other specialty media

For more information on supply capacities, go to www.xerox.com/office/5500supplies.

Recycling

For information on Xerox supplies recycling programs, go to www.xerox.com/gwa.